

QPR EnterpriseArchitect 2022.1

The new release makes modeling easier for faster results. Highlights include role-based modeling aids, support for industry specifications, and more flexibility in managing diagrams, tool palettes and favorites.

Easy and enjoyable modeling

Role-based ribbon

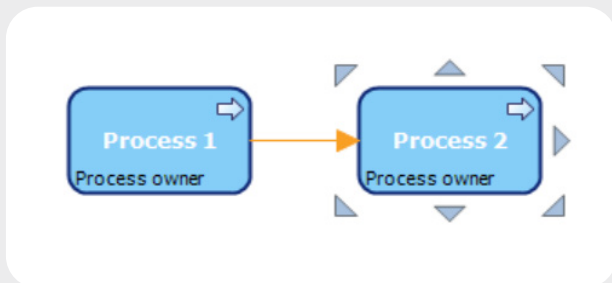
The Client comes with predefined ribbons, each optimized for a different user group, such as beginners, advanced users, and administrators. You can also configure your own ribbon. Your work is easier when your tools support your role.

Fresh Client user interface

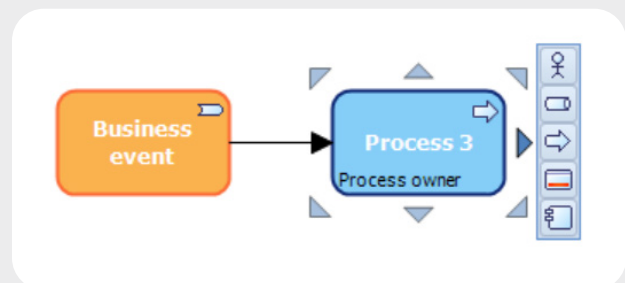
Updated color schemes and command button icons make for a clean and modern look.

Enhanced quick modeling

Modeling just got even easier with the quick modeling mode offering two ways of creating content. One is to create a copy of an existing element, which will carry forward customized graphical properties and attributes. The other way is to pick the next element from a popup menu, called the element type selector, containing your favorites. Just add the element to your favorites for the quick modeling mode to pick them up.



Quick modeling hotspots copy the element



Element type selector displays your favorites

Enhanced support for standards

ArchiMate 3.1 import and export

The import and export functionality has now been made native in our tool. The new version provides better support for the Open Group's ArchiMate Model Exchange File Format (MEFF) in terms of diagram hierarchies and custom attributes – and our stance as a proud ArchiMate® 3 Certified Tool provider.

BPMN 2.0 XML import and export

Import process models from other process modeling tools or export process models to another tool, such as a process workflow engine.

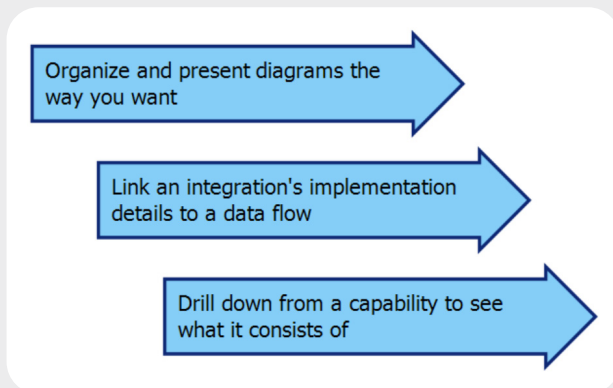
ArchiMate 3.1 template

Adopt the newest specifications of the modeling language to improve knowledge and model transferability.

Modeling enhancements

Navigate freely between diagrams

Move freely between diagrams by adding a diagram link to any element or connector. Use it to give drill-down functionality to non-hierarchical elements, jump over process levels, or to provide a quick link to any other diagram.



Favorites for each tool palette

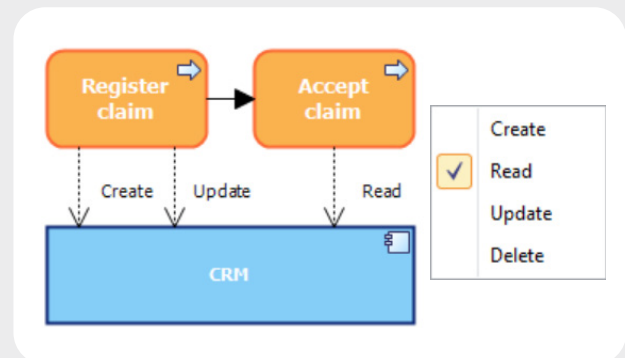
When you select your favorite tools for each tool palette, it makes it even easier to create content. Your favorites will also appear in the element selector when using the quick modeling mode (refer to first page).

Easy selection of tool palette

You can now configure tool palettes independently, then select and save a tool palette for an individual diagram from a list of available tool palettes. This decoupling of tool palettes and diagram types allows tool palettes to be freely reused across diagrams. It makes the management of tool palettes easier and facilitates model management.

Popup menu

You can now add enumerated values, such as CRUD (Create, Read, Update, Delete), to relation elements through a popup menu.



A new way to look at your operations

The new release creates the capability to implement our newest tool, the QPR BusinessPortal. The intuitive web portal is for publishing your architectural content using modern UX features that decrypt modeling notations for the everyday user.



QPR Software Plc (Nasdaq Helsinki) provides process mining, performance management and enterprise architecture solutions for digital transformation, strategy execution and business process improvement in over 50 countries. QPR software allows customers to gain valuable insights for informed decisions that make a difference.