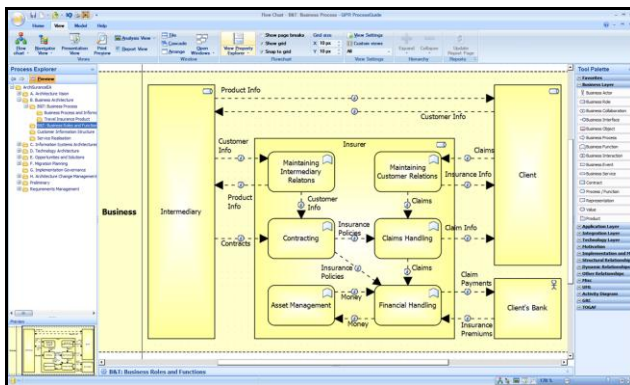


Many organizations that start with Enterprise Architecture Management (EA) soon find themselves struggling with the scope of their EA initiative and the diversity of tools that are used by different stakeholders, teams and departments. Because of this, it remains difficult to obtain a holistic view on how the organization operates and analyze the effects and costs of changes, such as mergers, acquisitions, outsourcing or even the replacement of a single IT system. QPR for Enterprise Architecture offers your organization a single environment to manage and link all architecture domains and involve all your EA stakeholders – from your business process users to your IT architects – by addressing the usability and functionality requirements of all your EA tool users.

Manage All Domains in One Tool

Enterprise Architecture frameworks and methods commonly identify four domains of enterprise architecture: business, applications, data and technology. With QPR for Enterprise Architecture your organization can manage all domains in the same software, because it is flexible, powerful and user friendly – essential characteristics to ensure a good fit with your needs as well as the involvement the business-side of your organization and IT-side. As all domains in QPR for Enterprise Architecture are linked, it will become easier to identify how changes in one domain have an effect on the other domains and to accurately assess the business-criticality of IT requirements. Most importantly, with QPR you will ensure business and IT alignment so that IT assets, processes and implementation truly become a supporting force in the realization of your business objectives.

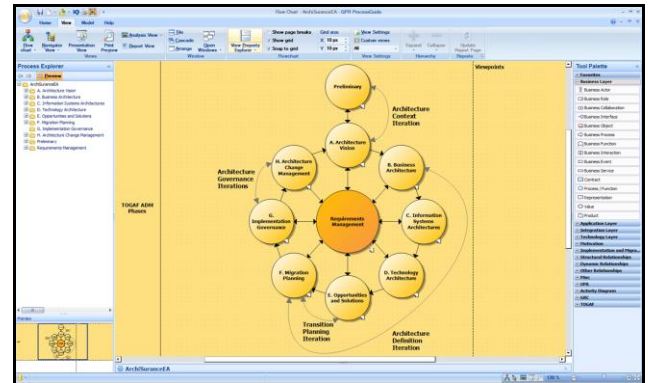


Value Chain Diagram in QPR ProcessGuide Designer

Tailor the EA Method to Your Needs

No available notation or framework will fully suit the individual needs of your organization. Frameworks such as TOGAF address this by specifying a core set of required components while allowing extensions to this. Most available EA tools however, do not allow method customizations and restrict their users to working within the notation, catalog- and diagram type limitations that those tools offer off the shelf. This often results in the need to purchase other tools and adapt working practices to compensate for this – reducing the efficiency and effectiveness of your EA work. QPR for Enterprise Architecture offers a completely open metamodel, meaning that it will support all

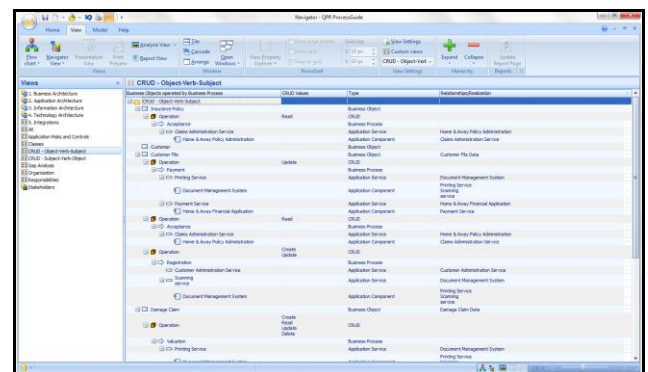
architecture artifacts, any standard and any framework (TOGAF, Zachman, ArchiMate, UML, IDEF, BPMN etc.) as well as custom approaches. Customizing the notation, viewpoints, catalogs, diagram types and matrix views furthermore is easy and safe, and does not require your organization to hire consulting services as is typical with many other EA software alternatives.



QPR ProcessGuide supporting TOGAF framework

Connect All the Parts of Your Architecture

To help you define and analyze how your organization's business processes work in tandem with your information and communication technology systems, QPR for Enterprise Architecture allows you to connect the various architecture artifacts and building blocks to each other by defining relationships between them.



Analyze and edit relationships in QPR ProcessGuide catalog views

This will provide a holistic view of your organization: its' processes, the information that is exchanged between actors and systems, the data stored in, and shared between applications and the hardware these applications run on. It becomes easy to identify dependencies, such as for example what business processes, actors and roles are affected by a change in an application component. The QPR repository keeps track of defined relationships and allows users to view and maintain them in various ways: through diagrams, catalog hierarchies and matrix views.

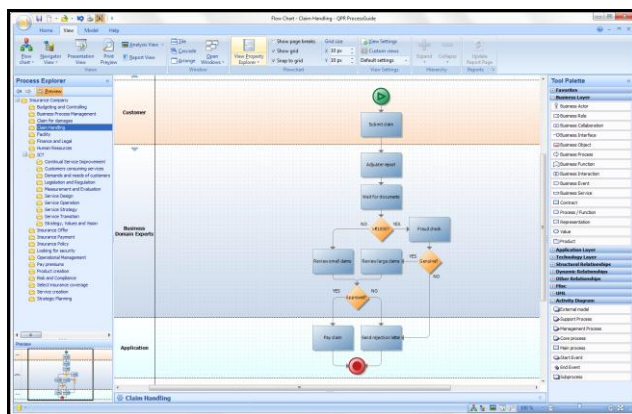
Maintain Information Consistently and Effectively

QPR for Enterprise Architecture is based on a central repository that contains all the parts of your architecture specifications: the

building blocks, catalogs, diagrams and matrix views. Powerful administration functionality enables you to centrally manage and govern all available building block types and instances to ensure consistency throughout your architecture specification. Unique to QPR is the ability to model building blocks (such as actors, application components, services, interfaces, functions, risks, controls, measures etc.) and their catalogs independently from the diagrams and matrix views in which they are instantiated. This allows for a much more flexible and effective approach to Enterprise Architecture Management as there is no need to follow a strict sequence. Instead, you are able to add, edit and remove catalog items freely and non-destructively at any point in time.

Get All Stakeholders Actively Involved

Getting business users involved in Enterprise Architecture work is a challenge for most organizations, not in the least because the tools in use are perceived as too complex to use and notations like UML and BPMN far from the perceptions of business users. IT users on the other hand require functionally rich tools that allow them to be productive in defining and maintaining all the necessary information. With QPR you get a professional EA environment that provides all the functions found in leading modeling environments, but in a package that is just as easy to use as the Office productivity tools that both IT and business users work with daily. QPR offers a Microsoft-standard intuitive ribbon user interface, aimed at making all tools easy to find and operate. Many operations furthermore are easy to perform in multiple places intuitively, allowing users to work productively in a way based on their own preferences.



Modeling business processes in QPR Process Designer

Integrate External Information

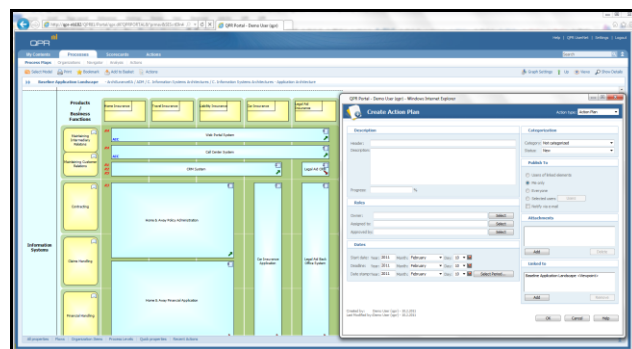
Enterprise Architecture Management is a large undertaking in any organization and will involve a large amount of additional information to guide and direct the work. Examples include standard message specifications in EDIFACT and XML formats, data content examples, purchase order templates, work instructions, policies and much more. QPR allows you to link all this information with diagram, catalog and matrix objects and make it easily available to users through a single point of access.

QPR ProcessGuide provides out of the box integration with Microsoft Office SharePoint, which enables designers to browse SharePoint Document libraries and adds user rights management.

Convenient Reporting, Publishing and Collaboration

QPR offers several ways to share architectural information conveniently. Users get portal-based access to the information according to their access rights. They can browse information, generate and share online reports, schedule reports and export information to Office Tools like Microsoft PowerPoint and Excel. The QPR Portal also allows stakeholders and teams to work together by providing web forms that allow them to add comments, assign tasks to others, launch projects and monitor progress. Integration with Microsoft Word furthermore allows you to design report templates in Word and publish/update these reports with the latest information whenever you wish to.

QPR also offers an API and the QPR Web Services Foundation, which provide support for developing and populating Enterprise Architecture models and importing information from third party tools such as Microsoft Visio or via XPD. L.



Make all information accessible online with dynamic publishing and provide web form-based collaboration among stakeholders.

Manage Development in a Controlled Way

Governance in QPR also applies to lifecycle management of your Enterprise Architecture artifacts. With QPR you can control their development in a controlled fashion by providing approval and version management for the models. Also the publishing of models can be controlled, allowing you to isolate development material from live or published materials.

Find Out How We Can Help You Today!

Whether your organization is new to Enterprise Architecture management or seeking ways to improve on how to execute your EA initiative, our experts are ready to assist your team. For more information, for scheduling a live demo, requesting an evaluation version or to discuss with our experts how we can help you, please contact sales@qpr.com

QPR Software Plc

QPR Software Plc offers the best services and software for developing processes and enterprise architecture. QPR has more than 1,500 private and public sector customers across the globe in more than 50 countries. QPR's shares are listed on the NASDAQOMX Helsinki Ltd.

For more information about QPR for Enterprise Architecture visit www.qpr.com/enterprise-architecture.htm